

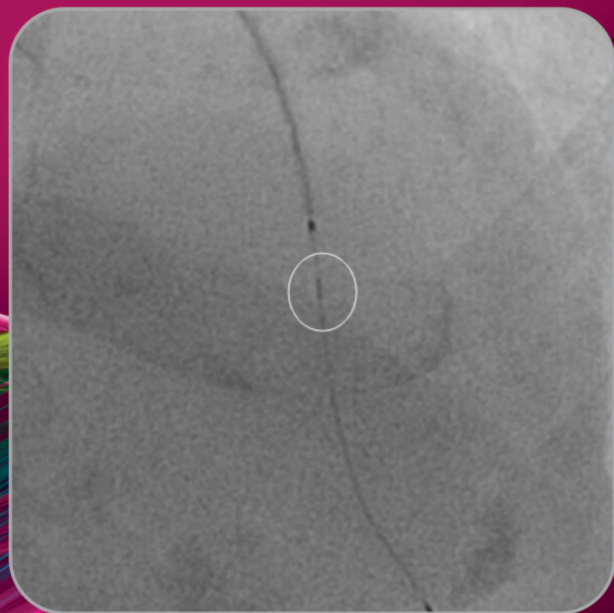
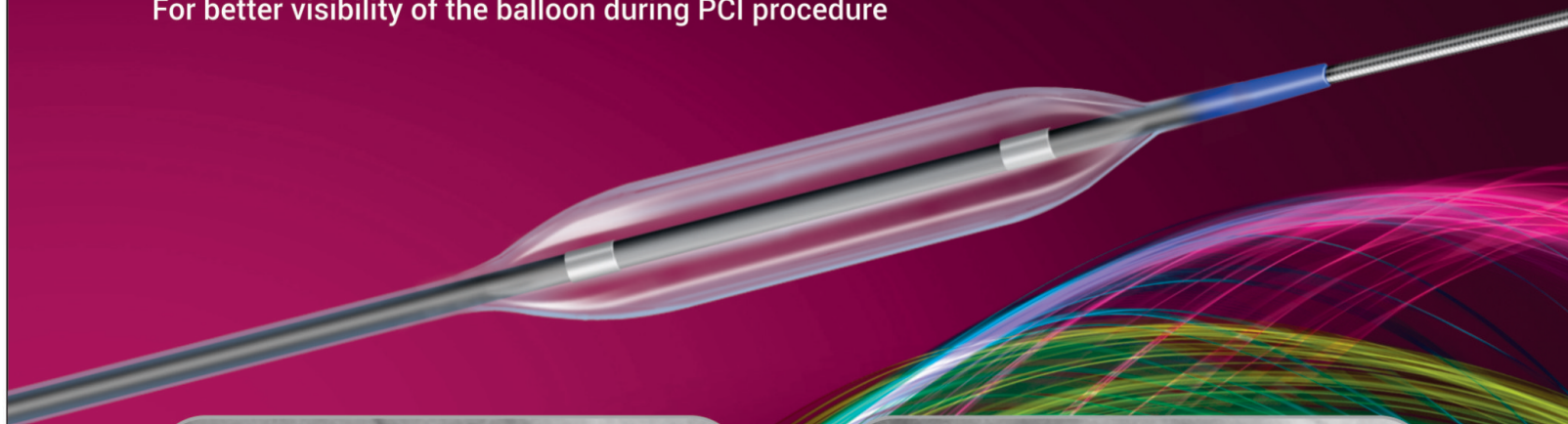
WilmaTM NC

NON-COMPLIANT PTCA BALLOON DILATATION CATHETER

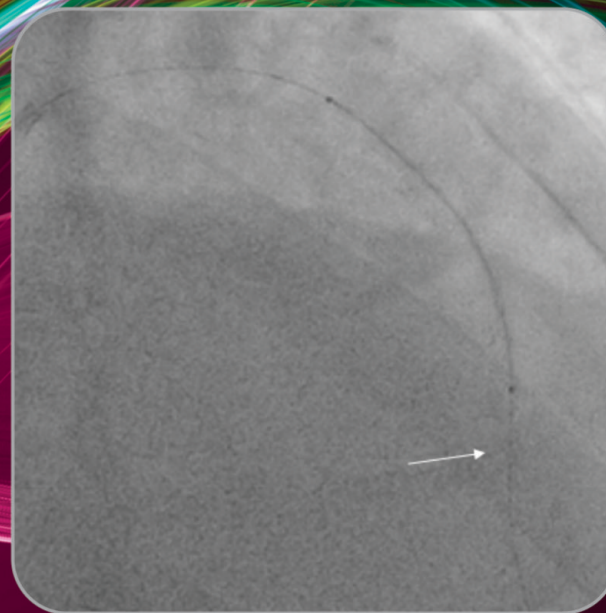
CE
2460

Tapered Radio-opaque Tip

For better visibility of the balloon during PCI procedure



Wilma NC



Brand A

Uniquely tapered Soft tip

- Ultra low profile for softer penetration
- Optimum Crossability
- Minimum vessel wall trauma

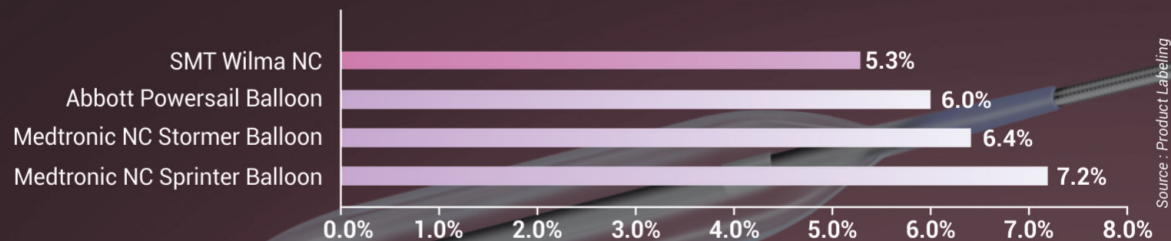
Rated Burst
Pressure
20 atm

Intelligent engineering

Excellent
deflation time*
Average less
than 8 seconds

*Data on file

Growth Between Nominal and Rated Burst Pressure (3.0 mm Balloon)



Technical Specifications

Guiding Catheter Compatibility: 5F

Balloon Material	Nylon 12
Balloon Fold	3-fold memory
Balloon diameter	2mm-4.5mm
Balloon length	6mm-29mm
Tip entry profile	0.016" (0.41mm)
Excellent deflation time	Average less than 8 seconds
Shaft diameter	Proximal 1.95F, Distal 2.67F
Catheter length	140cm
Rapid exchange length	25cm
Markers on the proximal shaft	90cm and 100cm
Maximum recommended guidewire	0.014" (0.36mm)
Guidecatheter compatibility	5F Compatible

Size Matrix

Balloon Diameter	Balloon Length (mm)							
	06	08	10	12	15	20	25	29
2.00 mm	✓	✓	✓	✓	✓	✓	—	—
2.25 mm	✓	✓	✓	✓	✓	✓	—	—
2.50 mm	✓	✓	✓	✓	✓	✓	—	—
2.75 mm	✓	✓	✓	✓	✓	✓	✓	✓
3.00 mm	✓	✓	✓	✓	✓	✓	✓	✓
3.50 mm	✓	✓	✓	✓	✓	✓	✓	✓
4.00 mm	—	—	✓	✓	✓	✓	✓	✓
4.50 mm	—	—	✓	✓	✓	✓	✓	✓

✓ Available sizes