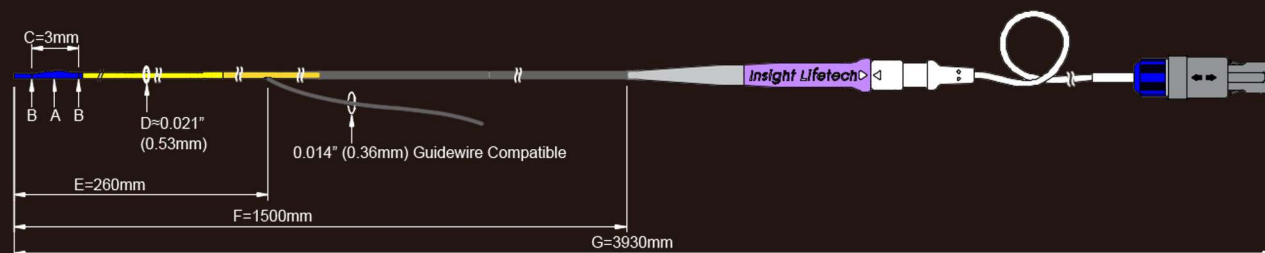


Technical Datasheet



Rapid • Accurate • Reliable • Cost Effective

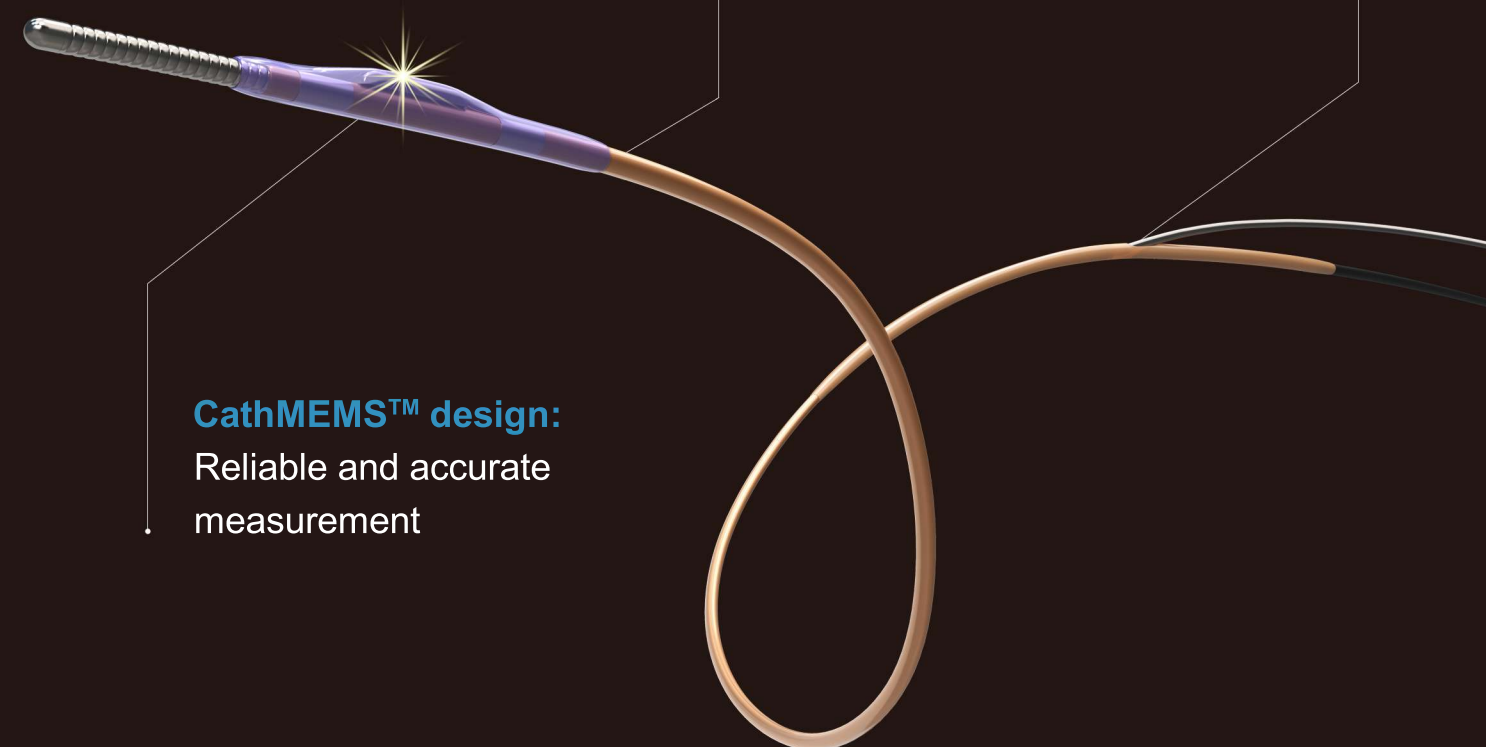
TruePhysio & VivoCardio FFR/cRR System

TruePhysio® Rapid Exchange Pressure Microcatheter (Model# 1-14-1)	
Design	Rapid exchange, single lumen microcatheter
Tip to sensor distance (Blind section length)	2.5mm
Microcatheter length	3930mm
Rapid exchange distal shaft length	260mm
Distal profile	0.0205"
Pressure sensor	CathMEMS
Sensor location	Between 2 marker bands
Pressure range	-30 to 300mmHg
Pressure accuracy	±1mmHg + (±1% of reading) (-30~50mmHg); ±3% of reading (50~300mmHg)
Drift from zero	<5mmHg/h
Guide wire compatibility	Compatible with 0.014" guidewire
Maintain wire position during pull-back	

VivoCardio® Cardiovascular Pressure Measurement (CPM) System (Model# U152301)	
Operating voltage	100-240V, 50/60Hz
Rated power consumption	35VA
Operating temperature	15°C ~ 35°C
Operating relative humidity	30%RH ~ 75%RH
Storage temperature	-20°C ~ 70°C
Storage relative humidity	10%RH ~ 95%RH
Weight (with power supply and cables)	4.8KG
Dimensions	337mm x 245mm x 108mm (length x width x height)
Pressure range	-30mmHg ~ 300mmHg
Pressure accuracy	±1mmHg + (±1% of reading) (-30~50mmHg); ±3% of reading (50~300mmHg)
Pressure drift	<5mmHg/h
Frequency response	0 ~ 25Hz

Rapid exchange design:
Freedom of guidewire
selection

Ultra-thin profile:
In-lesion profile 0.0205"



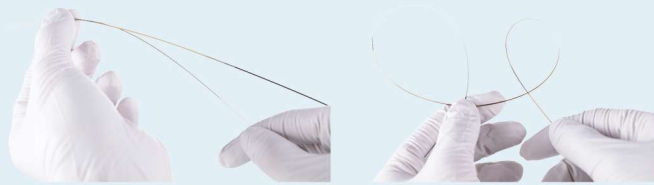
CathMEMS™ design:
Reliable and accurate
measurement

Insight Lifetech Co., Ltd.

3rd Floor and 10th Floor, Building 3, Tinwe Business
Park, No. 6 Liufang Road, Baoan District, 518052
Shenzhen, PEOPLE'S REPUBLIC OF CHINA
Visit our website: www.insight-med.com
Contact us: +34 653 571 209 (EU)
+86 0755 2307 4845 (China)
E-mail: export@insight-med.com



TruePhysio® Rapid Exchange Pressure Microcatheter



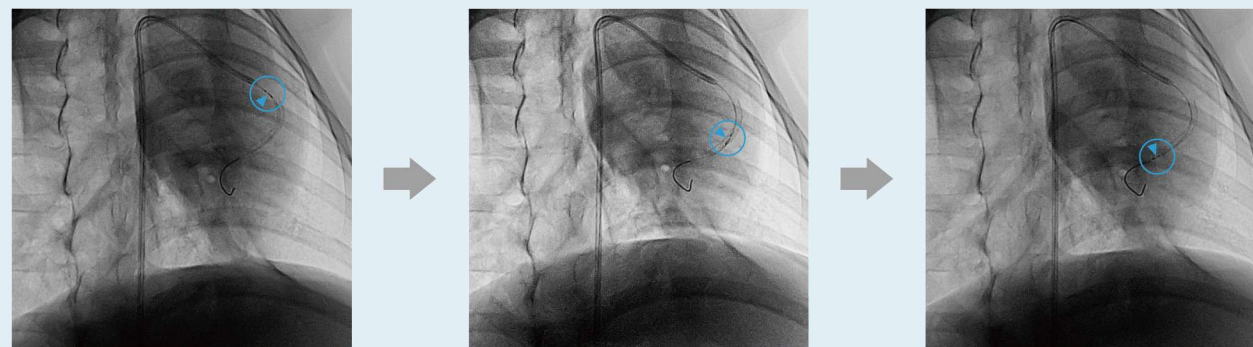
Freedom of guidewire selection

- Rapid exchange design
- Compatible with any 0.014" guidewire
- 0.0205" in-lesion profile with good flexibility

Designed for pullback and post-PCI measurement

- Guidewire position can be maintained during pullback
- No need to rewire after stent implantation

TruePhysio® microcatheter can be maneuvered easily over the guidewire through the stent in a curved vessel for post-PCI measurement¹



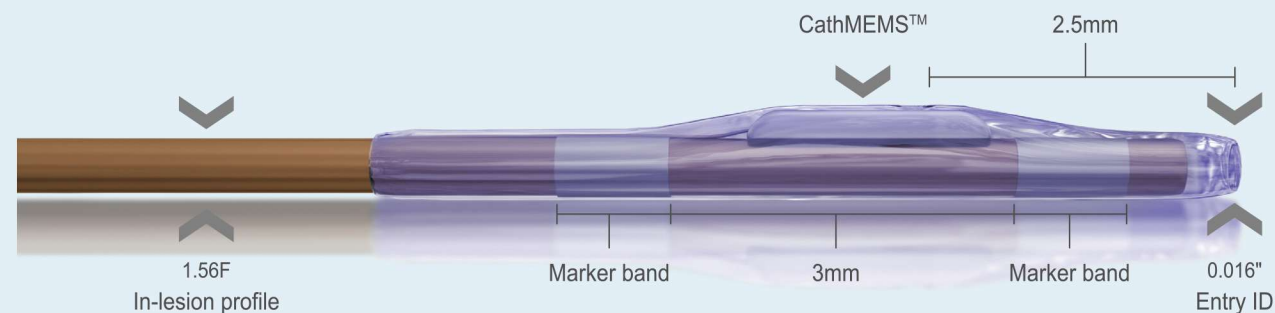
TruePhysio® at the proximal part of stent

TruePhysio® passing the stent

TruePhysio® successfully crossed stent

Accurate, convenient and time-saving measurement

- CathMEMS™ design guarantees accurate and reliable measurement
- Easy handling for tandem, diffuse, bifurcation, multi-vessel lesions and tortuous anatomy
- 2.5mm tip to sensor distance: shorter blind and stiff section
- Dual marker design allows for accurate location of sensor



¹ TruePhysio® microcatheter data on file at Insight Lifetech

Non-hyperemia Physiological Guidance

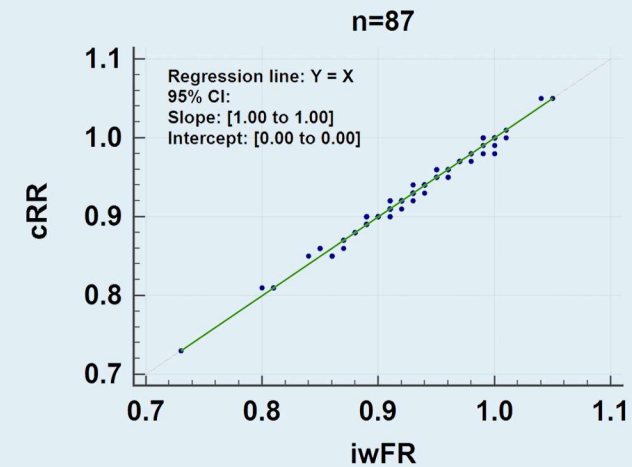
cRR (constant resistance ratio)

- Proprietary adenosine-free technology
- Pull-back assessment swifter with cRR
- cRR is numerically equivalent to iwFR²

Diagnostic accuracy of cRR

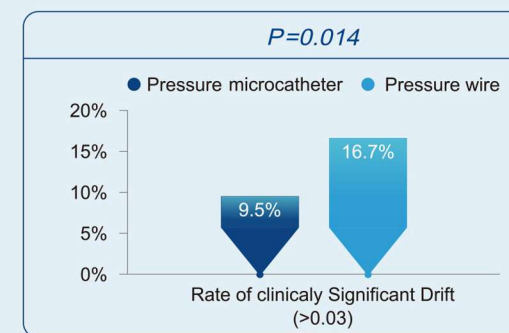
(cutoff value of 0.89) referenced to iwFR (0.89) was **97%**

Passing-Bablok regression analysis of cRR and iwFR values



Less drift occurrence³

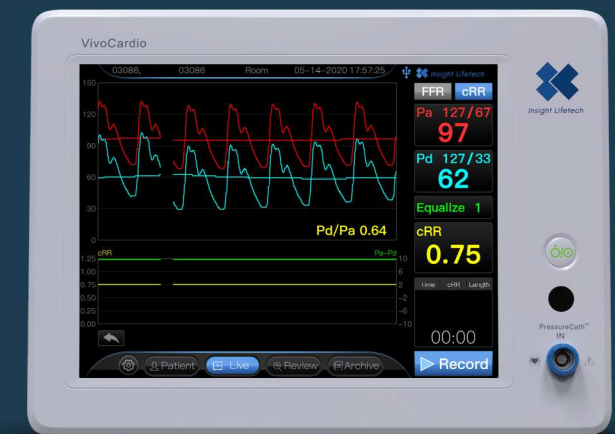
- Less drift occurrence due to integration of catheter and cable, no need for disconnection and reconnection



² Abstracts of PCR e-Course 2020. Euro20A-OP089

³ SUPREME Study(NCT03541577), CIT 2020 Late-breaking Trial #LB-0008

VivoCardio® Cardiovascular Pressure Measurement (CPM) System



- 12" touch screen
- One-tap switch between FFR and cRR
- Offline software for data review
- Storage of up to 1000 hours of recording
- Automatic data recovery in case of power outage